

# 3COM® BASELINE PLUS SWITCH 2426-PWR



3Com Baseline Plus Switch 2426-PWR

## Overview

The “smart” voice-ready 3Com® Baseline Plus Switch 2426-PWR is a web-managed Layer 2 10/100 Ethernet switch that delivers enterprise-class features, customized and priced for small- and mid-sized organizations. With an easy-to-use switch interface and advanced features (VLANs, IEEE 802.1x authentication and Rapid Spanning Tree), twenty-four 10/100 and two dual-purpose Gigabit ports, and Power over Ethernet (PoE), the Baseline Plus Switch 2426-PWR is the most cost-effective way to provide a converged network.

## Key Benefits

### LAYER 2 SWITCHING WITH ADVANCED FEATURES

The Baseline Plus Switch 2426-PWR has twenty-four PoE-enabled 10/100 ports and two dual-purpose Gigabit ports (copper or SFP-based fiber) to connect to high-performance computers, servers, or core network backbones.

The switch provides non-blocking performance—all ports perform at wirespeed which helps to eliminate network traffic bottlenecks. Manual link aggregation allows ports to be grouped together to form an ultrahigh-bandwidth connection that greatly expands bandwidth capacity to the network backbone.

This switch has the features that help build a voice ready network, with support for auto-voice VLAN, SNMP-based management, IGMP snooping and query and IEEE 802.1x for strengthening security.

The Baseline Plus Switch 2426-PWR also supports Spanning Tree and Rapid Spanning Tree, traffic prioritization, priority queuing and VLANs. These

switching features ensure optimal use of available bandwidth as traffic flow is directed according to the needs of the business.

### POWER OVER ETHERNET

The Baseline Plus Switch 2426-PWR provides a total of 154 watts inline power to attached devices—access points, Voice over IP (VoIP) phones, IP security cameras, etc.—over a single Ethernet cable, resulting in significant deployment cost savings. Power over Ethernet with 15.4 Watts of power is supported.

### NO SWITCH SETUP REQUIRED

This Baseline Plus switch is operational straight out-of-the-box; as long as default settings are acceptable, there is no need to configure the switch. If desired, the switch can be configured using a web browser or SNMP management software.

### ENHANCED INTUITIVE MANAGEMENT OPTIONS

For networks that require more control, the switch management interface allows even novice users to quickly and confidently configure the switch during initial setup or normal operation.

In addition, the web interface features individual port-traffic monitoring (port mirroring) and a unique, quick-glance switch status review. A cable diagnostic tool lets users troubleshoot basic connectivity problems via the web management interface further simplifying network installation.

The switch also supports a compact Command Line Interface (CLI) that is accessed via the front panel console port. Using the CLI, major switch management options can be quickly configured.



## Key Benefits (continued)

### THREE YEAR HARDWARE WARRANTY

This switch comes with a Three Year Limited Hardware Warranty. Also provided is Advanced Hardware Replacement, with next business day shipment available in most regions.

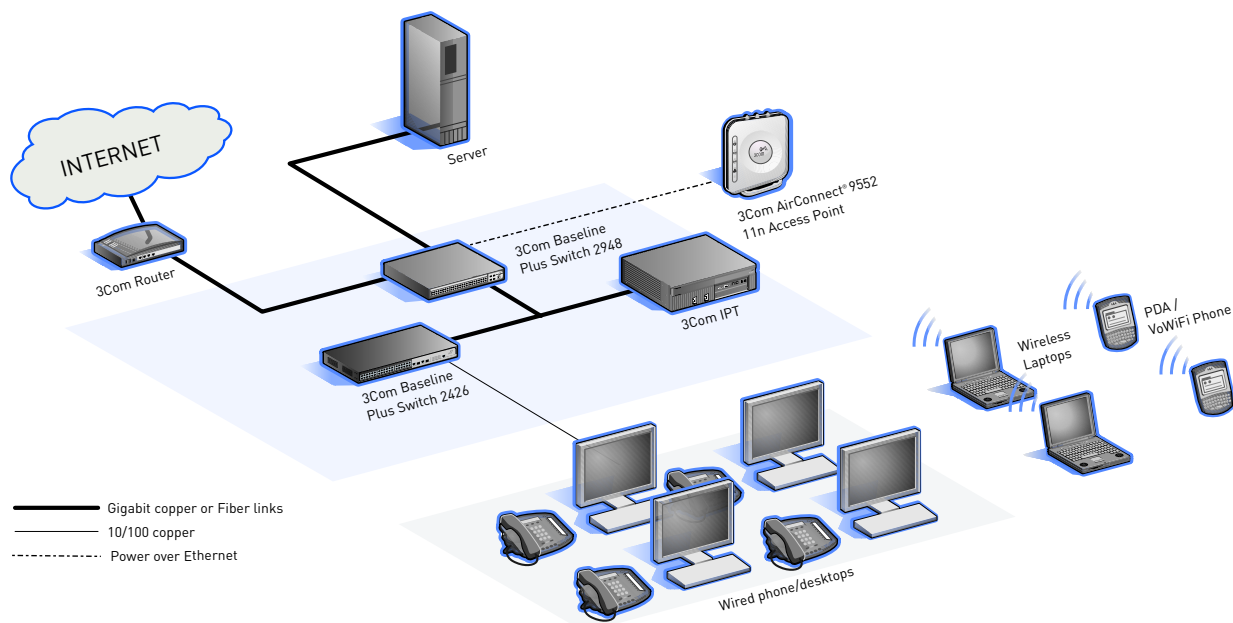
### SERVICE

3Com products are backed by 3Com Global Services and authorized partners with demonstrated expertise in network assessment, implementation and maintenance. Ask about which 3Com Network Health Check, installation services and maintenance service packages are available in your area.

## Feature Summary

FEATURE	DESCRIPTION
Traffic prioritization and auto-voice VLAN	Traffic prioritization, using IEEE 802.1p Quality of Service (QoS), and automatic assignment of VoIP traffic to dedicated VLANs help ensure that critical time-sensitive traffic gets the priority needed for quality communications.
Outstanding value	Take advantage of flexible, configurable and powerful switching that costs not much more than an unmanaged switch.
Flexible Gigabit uplinks	Daisychain multiple units together via the built-in copper Gigabit uplink ports or connect to a network backbone via SFP-based fiber modules.
Enhanced browser-based user interface	Easy-to-use user interface allows even the most novice users to configure the switch during initial setup and monitor it during normal operation.
PoE support	Provides power for IP phones, wireless LAN access points, and other compliant devices over the same cable used for data; lowers total cost of ownership since there is no need to run additional electrical wiring.
VLANs	Segment the network by grouping users based on their data or traffic exchange requirements. This ensures optimal use of available bandwidth as traffic flow is directed according to the needs of the business.
Manual link aggregation (trunking)	Group together up to 8 ports to form an ultra-high-bandwidth connection to the network backbone; help prevent traffic bottlenecks.
LACP	Link Aggregation Control Protocol (LACP) based on the IEEE802.3ad standard can be used for dynamic link aggregation and the switch only supports static LACP.
Traffic monitoring (port mirroring)	Administrators can examine suspect data streams received on any port by mirroring the data stream to a monitoring port.
IEEE 802.1x network access control	Provides standards-based security with EAP-MD5 protocol.
ACL	Access Control Lists (ACLs) allow network managers to define classification actions and rules for specific ingress ports.
SNMP	Switch can be managed with SNMP-compatible tools.
RSTP	Rapid Spanning Tree Protocol (RSTP) detects and uses network topologies that allow a faster STP convergence without creating forwarding loops.
IGMP snooping and query	Multicast filtering optimizes network performance, instead of flooding traffic to all ports.
SSL	Secure Sockets Layer (SSL) is a security protocol providing secure connection service for TCP-based application layer protocols
LLDP	The Link Layer Discovery Protocol (LLDP) operates on the data link layer. With LLDP, a device can store and maintain information about itself and the directly-connected neighbor devices for network administrators to check link status.
PoE configuration	PoE power can be enabled or disabled per unit and per port; power can also be limited per port.
Cable diagnostics	Remotely detect cable issues using a browser-based tool.

## Baseline Plus Switch 2426-PWR In a Typical Installation



### Voice Ready Network

3Com Voice Ready Networks provide an innovative and holistic approach to assessing, recommending and implementing a converged network, solving the most vexing challenges that confront IT managers as they deploy Internet Protocol (IP) telephony systems. With 3Com Voice Ready Networks, organizations can optimize network infrastructure for realtime voice and video traffic, ensure secure communications and protect business assets.

The Baseline Plus Switch 2426-PWR is an integral component of this approach, offering:

- › Automatic assignment of voice traffic to separate VLANs
- › IEEE 802.1p prioritization and 802.1q VLANS
- › IEEE 802.1x authentication
- › Two dual-personality Gigabit SFP ports
- › SNMP support

## Specifications

### CONNECTORS

26 total available ports, comprised of:

- 24 auto-negotiating 10BASE-T/100BASE-TX configured as auto MDI/MDIX
- 2 dual-personality Gigabit port pairs, configurable as 10BASE-T/100BASE-TX/1000BASE-T or SFP.

### PERFORMANCE

8.8 Gbps switching capacity, max.  
6.6 Mpps forwarding rate, max.  
Wirespeed performance across ports. Store-and-forward switching.

### LAYER 2 SWITCHING

8,192 MAC addresses in address table  
512 port-based VLANs (IEEE 802.1q) Manual link aggregation:  
6 trunks with 8 ports per trunk, max.  
Auto-negotiation of port speed and duplex  
IEEE 802.3x full-duplex flow control  
IEEE 802.1d Spanning Tree Protocol (STP)  
IEEE 802.1w Rapid Spanning Tree Protocol (RSTP)  
Internet Group Management Protocol (IGMP) snooping on Layer 2 interfaces  
Multicast filtering.

### CONVERGENCE

4 hardware queues per port, with IEEE 802.1p Class of Service/Quality of Service (CoS/QoS) on egress  
Weighted Round Robin queuing

Traffic prioritization at Layer 2 using 802.1p QoS Auto VLAN assignment for voice traffic determined by vendor OUI

### SECURITY

IEEE 802.1X Network login; EAP-MD5 encryption  
3Com Local Database (LDB)

### POWER OVER ETHERNET

IEEE 802.3af  
15.4W per port; 154W per switch; max.  
ACL

### ENVIRONMENTAL REQUIREMENTS

Operating temperature: 0 to 40°C  
Operating humidity: 20 to 85% [non-condensing]  
Standard: EN 60068 (IEC 68)

### MANAGEMENT

Web-based configuration for:

- Port speed and duplex configuration
- Spanning tree
- VLANs
- IGMP snooping
- Link aggregation
- IGMP query
- Traffic monitoring
- LLDP
- LACP

- Broadcast storm control
- SNMP v1 and v2

Compatible with SNMP management tools like 3Com Network Supervisor and 3Com Network Director

CLI management supports initial setup of switch

### LED INDICATORS

Module active, power, link status/ speed/active

### AT-A-GLANCE TRAFFIC MONITORING

Ports: active, enabled, disabled  
Modules: present, active

### POWER SUPPLY

Input voltage: 100-240 VAC, 50/60 Hz  
Current rating: 3A, max.  
Power consumption: 205W, max.  
Power dissipation: 478 BTU/hr, max.  
Power inlet: IEC 320

### DIMENSIONS

Height: 4.4 cm (1.7 in or 1 RU)  
Width: 44.0 cm (17.3 in)  
Depth: 23.8 cm (9.4 in)  
Weight: 3.2 kg (7.1 lb)

### REGULATORY AND AGENCY APPROVALS

Safety: UL 60950-1, EN 60950-1, CSA  
22.2 60950-1, IEC 60950-1  
Emissions: EN 55022 Class A, FCC Part  
15 Subpart B Class A, ICES-003 Class  
A, VCCI Class A, AS/NZS CISPR22 Class A, K22.  
Environmental: EN 60068 (IEC 68)  
Immunity: EN 55024, K24.

### IEEE STANDARDS SUPPORTED

IEEE 802.1d Spanning Tree  
IEEE 802.1p Priority Tags  
IEEE 802.1q VLANs  
IEEE 802.1x Port Security  
IEEE 802.1w Rapid Spanning Tree  
IEEE 802.3 Ethernet  
IEEE 802.3ab Gigabit Ethernet  
IEEE 802.3u Fast Ethernet  
IEEE 802.3x Flow Control  
IEEE 802.3z Gigabit Ethernet  
ISO 8802-3

### PACKAGE CONTENTS

Switch unit, power cord, self-adhesive rubber pads, rack-mount kit, user guide, installation CD, warranty flyer

### WARRANTY AND OTHER SERVICES

Three Year Limited Hardware Warranty including power supply  
Limited Software Warranty for 90 days  
Advance Hardware Replacement with Next Business Day shipment in most regions  
90 days of telephone technical support  
Refer to [www.3com.com/warranty](http://www.3com.com/warranty) for details.

## Ordering Information

### PRODUCT DESCRIPTION

3Com Baseline Plus Switch 2426-PWR

### 3COM SKU

3CBLSF26PWRH

### TRANSCEIVERS

3Com 1000BASE-SX SFP	3CSFP91
3Com 1000BASE-LX SFP	3CSFP92

### 3COM GLOBAL SERVICES

3Com Wireless LAN Site Survey	<a href="http://www.3com.com/services_quote">www.3com.com/services_quote</a>
Network Health Check, Installation Services and Express <sup>SM</sup> Maintenance	
3Com Global Education and Training Courses	<a href="http://www.education.3com.com">www.education.3com.com</a>

Visit [www.3com.com](http://www.3com.com) for more information about 3Com network solutions.